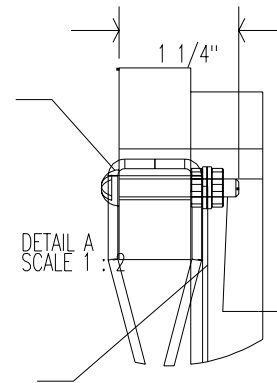


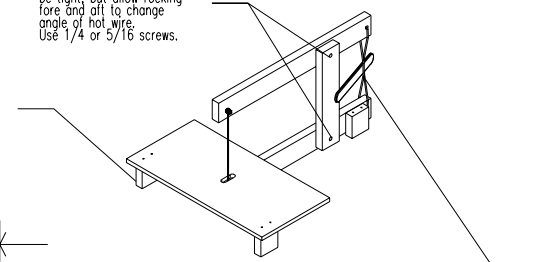
Tripod base for stability on any surface.

Put electrical connection under screw head, top and bottom.

Ni-chrome wire goes between flat washers.



Bolts through here should be tight, but allow rocking fore and aft to change angle of hot wire. Use 1/4 or 5/16 screws.



Use a twisted rope (no larger than 1/8") for tension.

#10 screw with two nuts and flat washers. First nut secures screw and electrical connector. Second nut secures hot wire.

