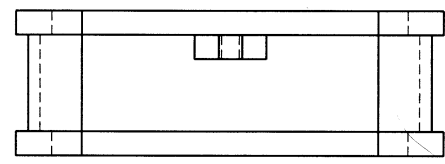
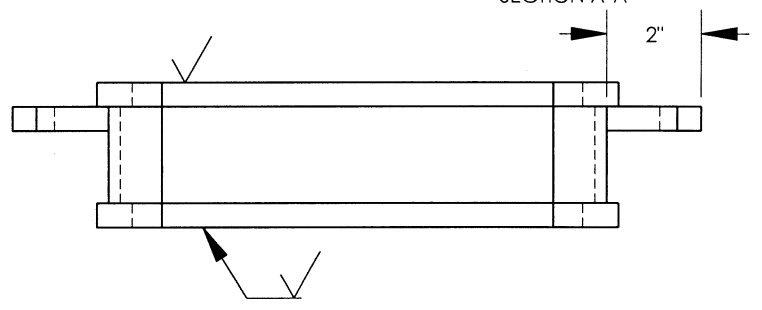
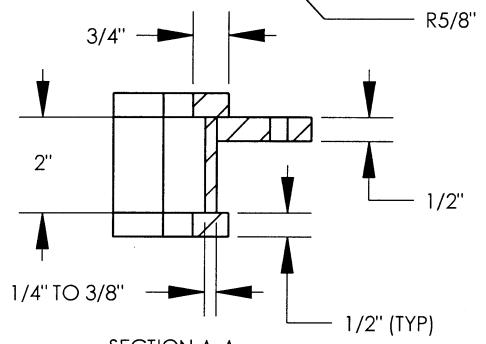
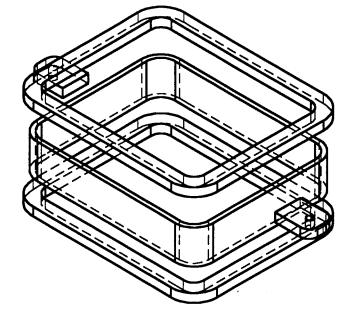
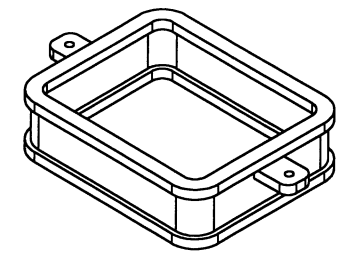


ALIGN BORE BOTH COPE AND DRAG TOGETHER.
 0.374 ϕ IN DRAG FOR PRESS FIT 3/8" PIN.
 .0376 ϕ IN COPE FOR SLIP FIT ON PIN,
 OR SLOT ONE END IN COPE.



- NOTES:
1. USE HOT MELT GLUE TO JOIN PIECES.
 2. COVER GAPS WITH MASKING TAPE.
 3. POUR AT 1450°F.
 4. SEE [HTTP://WWW.RAY-VIN.COM/CASTING/](http://WWW.RAY-VIN.COM/CASTING/) FOR GATING PHOTOS